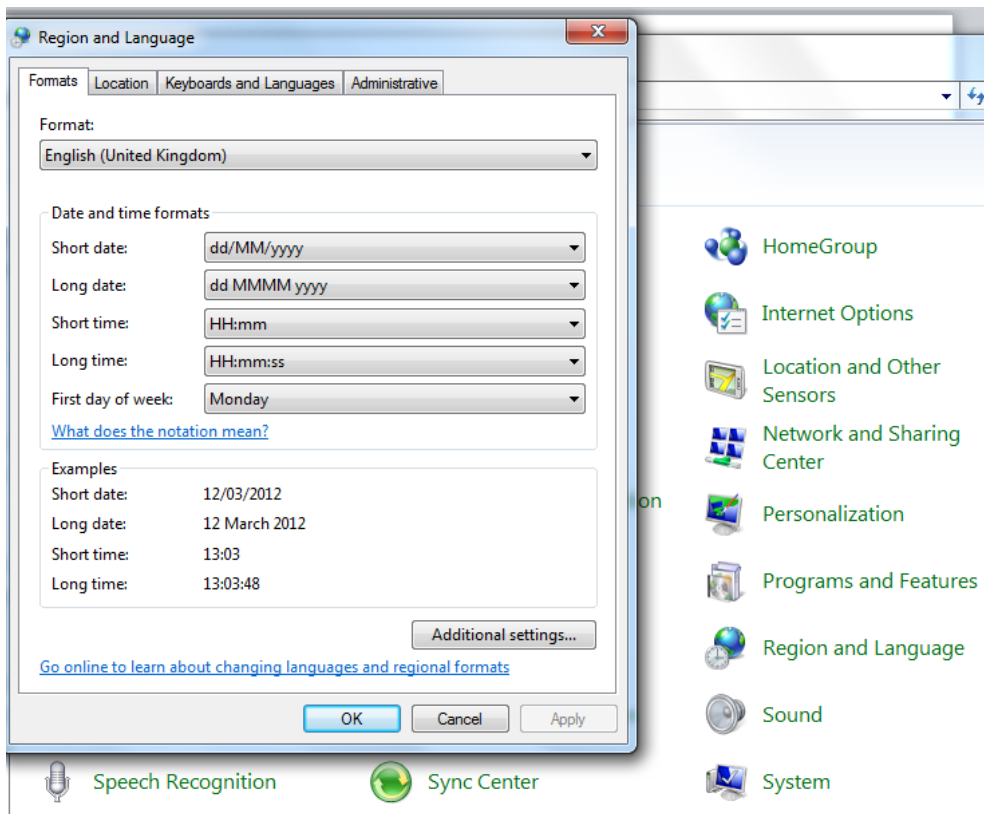


## Additional instructions for D-DAT - international users

A problem has been reported whereupon D-DAT crashes in Windows 7 computers outside the UK. This is due to a problem with how the spreadsheet reads the date and time using the VBA command DateValue. Some computers (e.g. in Belgium and the Netherlands) use date format of the form "yyyy/mm/dd" whereas the tool is designed to use "dd/mm/yyyy".

To fix this, alter the computer settings to do as follows:

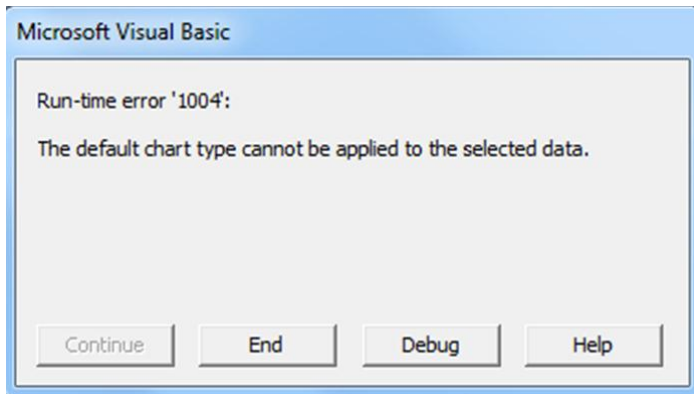
1. Open the Control Panel (icons view), and click on the Regional and Language Options icon, then close the Control Panel.
2. Change the date format to English (United Kingdom), and click on the Apply button (See screenshot below)



The tool should now work normally. This change can be undone once the tool does not need to be used.

## Additional changes in v.2 due to problems caused by upgrade to Windows 7 / Excel 2010

- a) Bug fix on graph plotting. A crash with runtime error 1004 (see screenshot below) was caused due to the way the command Charts.Add in the new version handles a screen select. This was fixed by adding the command Range("A1").Select before that instruction.



- b) Problems with graph colours. In Excel versions above 97 the unweighted and weighted dose charts appeared in black-and-white instead of colour. This has now been fixed.
- c) Minor sizing and positioning of chart issues have also been addressed and in general chart presentation has been improved.

